



ADULT • CHUNKS WITH BEEF

Leo's chunks: complete pet food formulated according to the age and physiological condition of the animal. Developed to provide a specific nutrition with the A-D3-E vitamins addition. Oven cooked chunkies in tasty gravy, ready to eat!

COMPOSITION

Meat and animal derivatives (beef 10%), cereals, derivatives of vegetable origin, minerals.

ANALYTICAL CONSTITUENTS

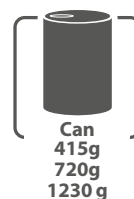
Crude protein 7.8%, crude fibre 1%, crude fat 6%, crude ash 3%, Moisture 80%.

ADDITIVES: NUTRITIONAL ADDITIVES/kg

Vitamin A (Retinyl Acetate) 1200 IU, Vitamin D3 160 IU, Vitamin E (all-rac-alpha-tocopheryl acetate 3a700i) 5 mg.

INSTRUCTIONS FOR USE

Daily ration for an adult medium size dog (10kg): 700 g, can be divided in 2 meals. Adapt the quantity according to the size, activity, and lifestyle of the animal. To be served at room temperature. Make sure that fresh, clean water is always available. When this product replaces another type, it is advisable to introduce it gradually over a period of at least 1 week. Store in a cool, dry place. After opening, store in a fridge and use within 2 days. Do not open the can if it is swollen. Pet food only, not suitable for human consumption.



MONGE & C. S.p.A. - Via Savigliano, 31 - 12030 Monasterolo di Savigliano (CN) - Italy Tel. +39 0172 747111 Fax +39 0172 747198/747199
www.monge.it E-mail: info@monge.it

